

Mercury

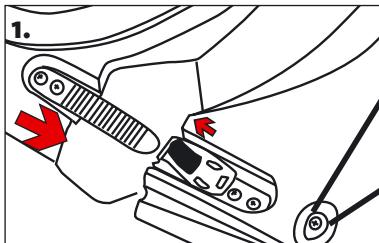
Point 65 Sweden

Manual

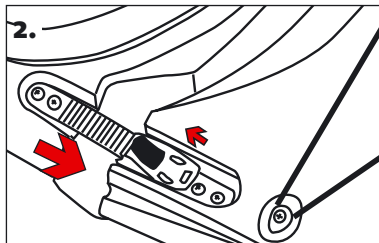
This manual will help you with the basics of putting your Mercury together for your next paddling experience. After some practice it takes literally 10 seconds to assemble your Mercury. To take it apart you only need to reverse the process.

Please read the warning sticker on your kayak for a safe and fun paddling experience. You will also find instructional films on www.youtube.com/Point65TV

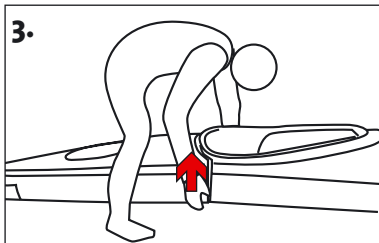
happy paddling!



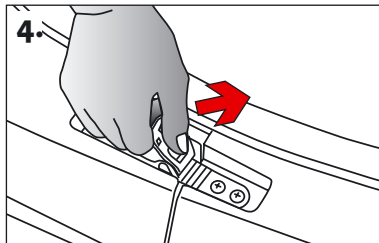
Place ratchet strap in correct position in buckle on both sides of the kayak



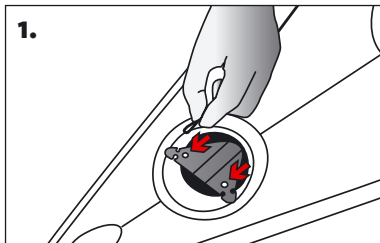
Push both parts of the kayak together, so that the ratchet strap is approx 2 cm inside the buckle.



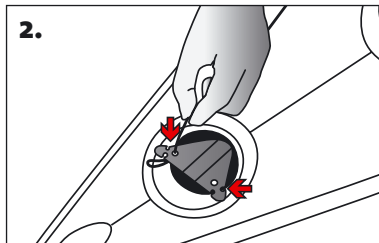
Straddle the back part of the kayak and lift, hooking the two parts. Then lower, automatically locking them.



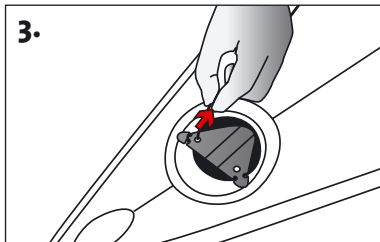
Tighten the buckle with the lever.



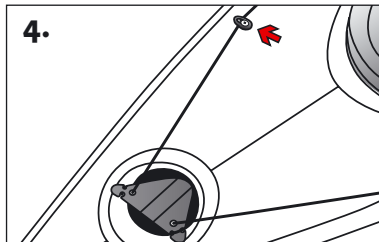
Pull the loop end of the rudder lines through the holes in the rudder head from above.



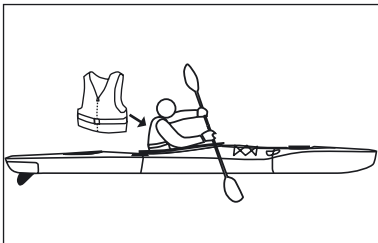
After pushing the loop through the hole, fold them back over the end corners.



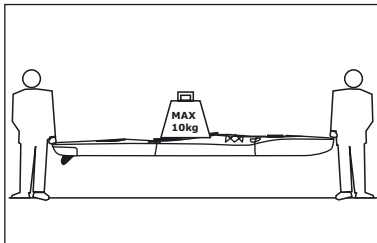
Tighten the loops over the corners by pulling on the rudder lines.



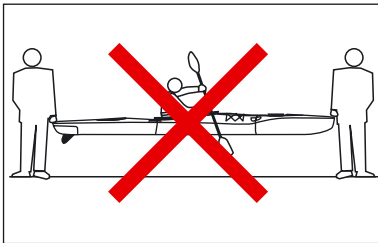
Make sure the line runs along the outside of the 2 deck fittings on either side of the hatch.



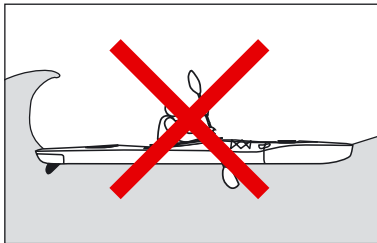
Always use a personal flotation device when paddling. Read warning sticker on kayak before usage.



Never place heavy objects in the kayak while carrying or dragging, this can damage the locking system.



Never carry or drag the kayak with someone sitting in the kayak, this can damage the locking system.



Never paddle the kayak in surf higher than 3 feet, this can lead to damage in the locking system.

Warranty and Disclaimer

Point 65 Sweden AB warrants that the product will meet the specifications stated in the instructions and Point 65 Sweden agrees to replace the product free of charge if the product does not conform to the manufacture specifications. Notice for replacement must be given within 60 days of the discovery of the defect.

Point 65 Sweden: www.point65.com | warranty@point65.com
Phone: +46 8 663 01 06 (for USA 206-905-9465)

In consideration of the above promises by Point 65 Sweden, the buyer agrees to and accepts the following conditions:

- That this warranty is in lieu of all other warranties, expressed or implied;
- That ALL WARRANTIES OF MERCHANTABILITY OR OF FITNESS FOR A PARTICULAR PURPOSE ARE HEREBY EXCLUDED AND/OR WAIVED;
- That the buyer's sole remedy shall be to obtain replacement of the product free of charge from Point 65 Sweden; and
- That this remedy is in lieu of all other remedies or claims for damages, consequential or otherwise, which the buyer may have against Point 65 Sweden.

Point 65 Sweden shall have no liability for any loss or injury caused, in whole or in part, by its actions, omissions, or negligence, or for contingencies beyond its control;

Point 65 Sweden is warranted to be free of defects in materials and workmanship for a period of one (1) year from the

date of shipping. During the warranty period the unit will be repaired or replaced by Point 65 Sweden at no charge as long as the unit has not suffered accidental damage, abuse, abnormal wear and tear, or misapplication. Such damage will be repaired at the purchaser's expense. Opening or altering the Product in any way voids this warranty.

The warranty extends only to you, the original purchaser. It is not transferable to anyone who subsequently purchases the Point 65 Sweden from you.

Please check with at www.point65.com regularly for product updates and information.

Also, some of my clients have used specific language to make sure some specific issues will not be covered and the buyer knows it in advance.

THIS WARRANTY DOES NOT COVER THE FOLLOWING:

- Normal wear and tear or as a result of abuse or failure to maintain kayak.
- Discoloration or cracking due to excessive sun exposure.
- Damage caused by alterations, modifications, storage or mooring to kayak.
- Transportation of kayaks; significant or incidental damage to kayak and/or personal property.
- Damage due to failure of following procedures and instructions provided.

- Kayaks not registered with manufacturer at time of warranty claim.
- Factory 2nds (Kayaks purchased as a Blem 2nds are not covered).

There is a risk of serious injury or death from drowning. Paddle sports can be very dangerous and physically demanding. The user of this product acknowledges, understands, and assumes the risks involved in paddle sports. Observe the following safety standards and safe operating practices whenever using this product.

- Always wear an approved personal flotation device.
- It is essential to ALWAYS wear a nationally approved personal flotation device (PFD).
- Do not exceed maximum weight capacity. Regardless of the number of persons on board, the total weight of persons and equipment must not exceed maximum weight capacity.
- Do not operate the kayak under the influence of drugs or alcohol.
- A helmet can prevent serious injury and save a life. Wear a helmet when appropriate.
- Do not paddle alone.
- Children must be supervised by a responsible adult at all times.
- Dress appropriately for weather and marine conditions; cold water and cold weather can result in hypothermia.

- Beware of offshore winds and currents as they can take you out to sea.
- Check weather forecasts and obtain local knowledge of the marine environment and weather conditions prior to your voyage. Be prepared for unexpected dangers. Be informed ahead of time regarding the river you are running. Maps and cautions can be obtained from the local BLM.
- Do not exceed your paddling ability; be aware of your limitations.
- Be aware of safe river water levels, tidal changes, currents, and obstacles in and above the water.
- Check your equipment prior to each use for signs of wear, leaks or failure.
- Tie a leash to your paddle when appropriate.
- Always inform someone of your paddling route, the time and place of your departure and your intended time and place of arrival.
- Always carry identification.
- Do not paddle in flood conditions.
- Make sure you are able to exit the craft if necessary. Beware of the dangers of ropes in your boat that may entangle you if overturned.
- Scout unfamiliar waters; portage where appropriate.

POINT 65°N
Kayaks SWEDEN

www.point65.com